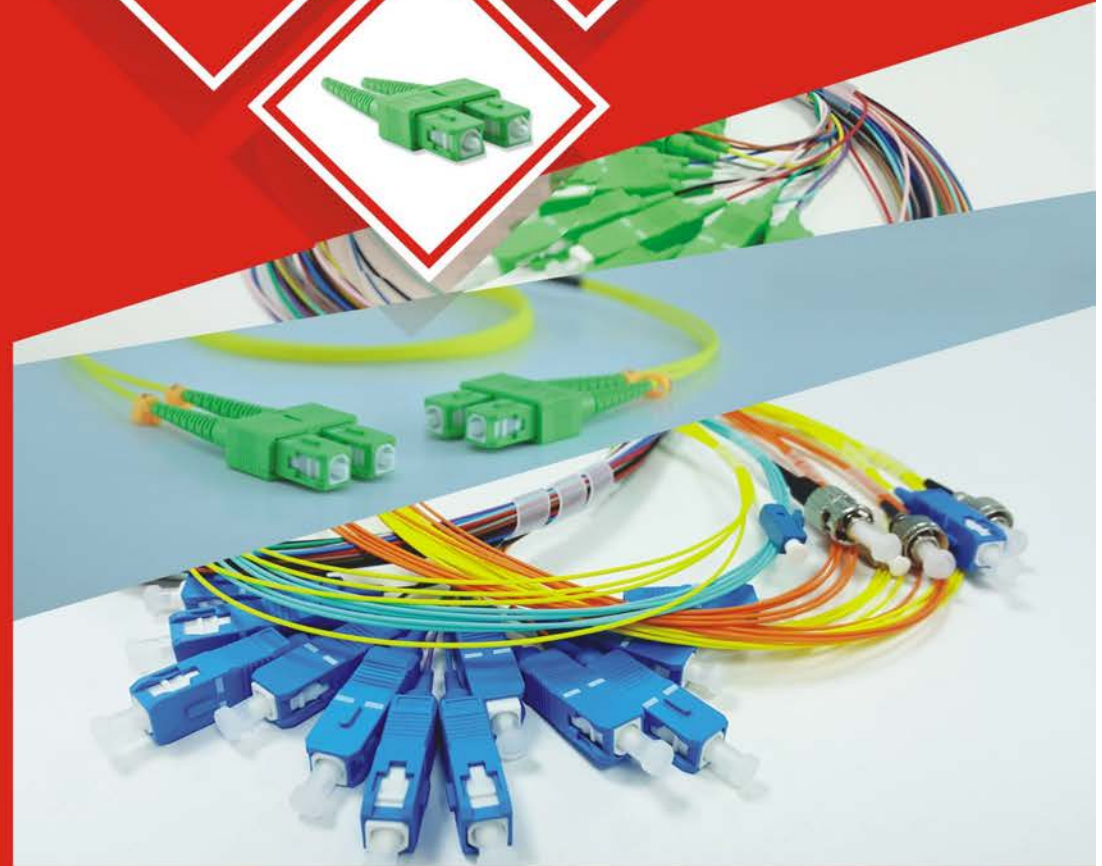




Welcome

Fiber Optic Passives
www.bcfiberoptic.com
info@bcfiber.it



GLOBAL OFFICES

B&C Fiber Factory
3/F, Block 6, Haomai Hi-tech Estate, NO. 387 Huating Rd,
Dalang St, Longhua, Shenzhen, China 518109
Tel: +86-755 2361 5515



Viet Fiber Factory

Lot K.02, Long hau Road, Long Hau Industrial Zone
Long Hau , Can Giuoc District, Long An Province, Vietnam
Tel: +84 8 3873 4859



B&C Fiber Italy office

Address: STRADA DEL CASCINOTTO 156 100156 TORINO, ITALY
Telephone +39 0110120383



B&C Fiber Turkey Office(OPF)

PERPA TICARET MERKEZI, B BLOK, FLOOR 12, NO:2144,
OKMEYDANI/ŞİŞLİ/İSTANBUL 34384 Turkey
Tel: +90 212 210 50 93



B&C Fiber Russia Office

Office 101, Mikhalkovskaya street 63B, Moscow, Russia
Tel: +7 968 688 21 67



B&C FIBER USA office

121 Meadow St., Hackensack NJ 07601, USA
Tel : +12014889445



B&C Fiber Spain Office

Cobalt 16-20, Nave C, Barcelona, 08038 Barcelona, Spain
Tel: +34 93 639 9818

www.bcfiberoptic.com
info@bcfiber.it



Connect The Future

For more than 10 years BC Fiber has been your leading provider of the finest quality Fiber Optic products in the market. Our capabilities, and experience are second to none, and through our quality control system we have managed to develop a high level of reliability with our products.

We Offer:

Guaranteed Excellence:

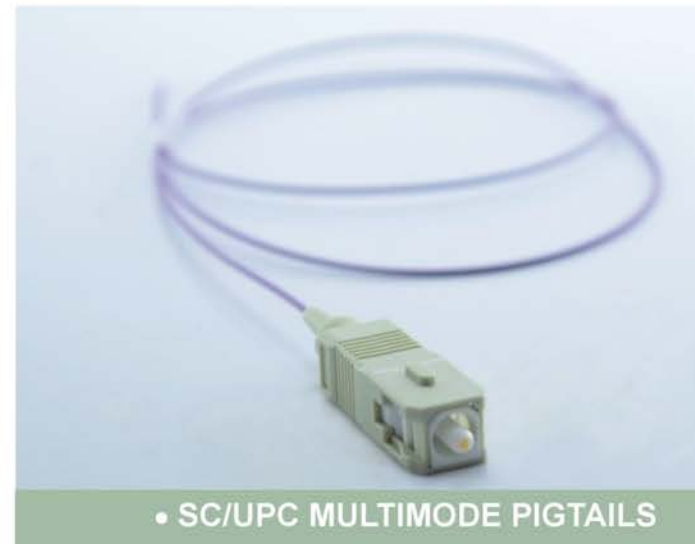
Our biggest advantage compared to the others is that, we are manufacturers, so you can be assured of the best qualitative products available to you thanks to our attention orientated production process instilled throughout our organization.

Rapid Deliveries:

With over 500 skilled employees working in our factories, production delays are a thing of the past. Orders are dealt with instantly and through our developed partnerships with logistic companies fast lead times are certain.

Endless Support:

Our sales team alone comprises of over 12 different nationalities, and not to mention our team of technical support you can be confident of benefitting from our knowledge and support without any hassle.



• SC/UPC MULTIMODE PIGTAILS

MAIN FEATURES

- Available with any type of connector: SC, LC, ST, FC, MTRJ, MU
- Polishing types: UPC and APC
- Any type of fiber: SM G652D, SM G655, SM G657A1, SM G657A2, SM G657B3, MM OM1, MM OM2, MM OM3, MM OM4
- Available as tight-buffer, semi-tight buffer or easy strip/loose tube
- Cable outer diameter (O.D.): 0.9mm, 2.0mm & 3.0mm (simplex or duplex zipcord), customized O.D. available
- Jacket available in LSZH (Low Smoke Zero Halogen), LSZH-FH (Flame Retardant UL94 V-0), PE or PVC Riser/Plenum (flame-retardant PVC)
- Any length
- Available in 6 or 12 color bundles
- Several boots (colors and length) and dust cap (color, shape)

OPTICAL PROPERTIES

- Maximum Insertion Loss: SM <= 0.20 dB, MM <= 0.30 dB
- Typical Insertion Loss: SM <= 0.15 dB, MM <= 0.20 dB
- Return Loss: SM (UPC) >= 55.0 dB, (APC) >=

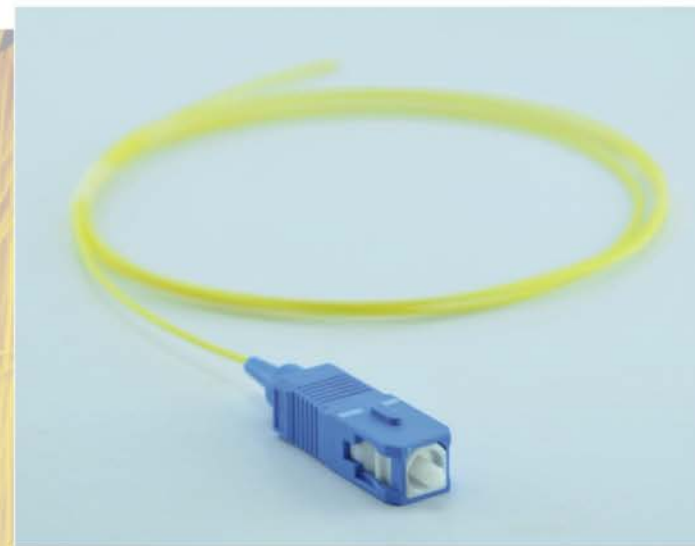
CLEANING WIPES



Color guide

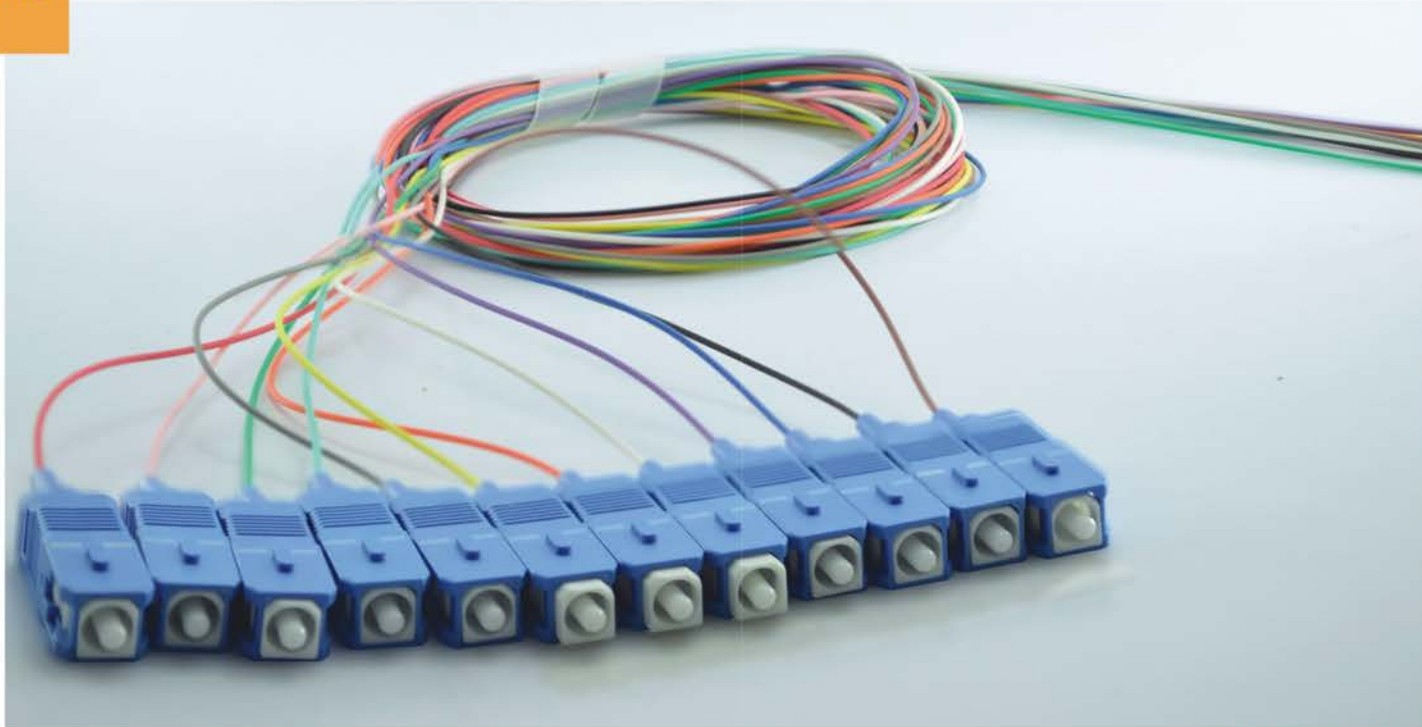


Packing guide





- MULTI-COLOUR PIGTAILS
- OUTDOOR PIGTAILS



MULTI-COLOUR PIGTAILS

OUTDOOR PIGTAILS

MAIN FEATURES

- Available with any type of connector: SC, LC, ST, FC, MTRJ, MU
- Polishing types: UPC and APC
- Any type of fiber: SM G652D, SM G655, SM G657A1, SM G657A2, SM G657B3, MM OM1, MM OM2, MM OM3, MM OM4
- Available as tight-buffer, semi-tight buffer or easy strip/loose tube
- Cable outer diameter (O.D.): 0.9mm, 2.0mm & 3.0mm (simplex or duplex zipcord), customized O.D. available
- Jacket available in LSZH (Low Smoke Zero Halogen), LSZH-FH (Flame Retardant UL94 V-0), PE or PVC Riser/Plenum (flame-retardant PVC)
- Any length
- Available in 6 or 12 color bundles
- Several boots (colors and length) and dust cap (color, shape)

OPTICAL PROPERTIES

- Maximum Insertion Loss: SM \leq 0.20 dB, MM \leq 0.30 dB
- Typical Insertion Loss: SM \leq 0.15 dB, MM \leq 0.20 dB
- Return Loss: SM (UPC) \geq 55.0 dB, (APC) \geq

CLEANING WIPES



Color guide



Packing guide





• SC/UPC MULTIMODE PATCHCORDS



MAIN FEATURES

- Available with any type of connector: SC, LC, ST, FC, MTRJ, MU
 - Polishing types: UPC and APC
 - Any type of fiber: SM G652D, SM G655, SM G657A1, SM G657A2, SM G657B3, MM OM1, MM OM2, MM OM3, MM OM4
 - Cable outer diameter (O.D.): 0.9mm, 2.0mm & 3.0mm (simplex or duplex zipcord), customized O.D. available
 - Jacket available in LSZH (Low Smoke Zero Halogen), LSZH-FH (Flame Retardant UL94 V-0), PE or PVC Riser/Plenum (flame-retardant PVC)
 - Any length
 - Maximum Insertion Loss: SM \leq 0.20 dB, MM \leq 0.30 dB
 - Typical Insertion Loss: SM \leq 0.15 dB, MM \leq 0.20 dB
 - Return Loss: SM (UPC) \geq 55.0 dB, (APC) \geq 60.0 dB, MM \geq 35.0 dB
- Several boots (colors and length) and dust cap (color, shape), see accessories section

One Click Connector Cleaner



Color guide



Packing guide



• MU/UPC PATCHCORDS



MAIN FEATURES

- Available with any type of connector: SC, LC, ST, FC, MTRJ, MU
 - Polishing types: UPC and APC
 - Any type of fiber: SM G652D, SM G655, SM G657A1, SM G657A2, SM G657B3, MM OM1, MM OM2, MM OM3, MM OM4
 - Cable outer diameter (O.D.): 0.9mm, 2.0mm & 3.0mm (simplex or duplex zipcord), customized O.D. available
 - Jacket available in LSZH (Low Smoke Zero Halogen), LSZH-FH (Flame Retardant UL94 V-0), PE or PVC Riser/Plenum (flame-retardant PVC)
 - Any length
 - Maximum Insertion Loss: SM \leq 0.20 dB, MM \leq 0.30 dB
 - Typical Insertion Loss: SM \leq 0.15 dB, MM \leq 0.20 dB
 - Return Loss: SM (UPC) \geq 55.0 dB, (APC) \geq 60.0 dB, MM \geq 35.0 dB
- Several boots (colors and length) and dust cap (color, shape), see accessories section

One Click Connector Cleaner



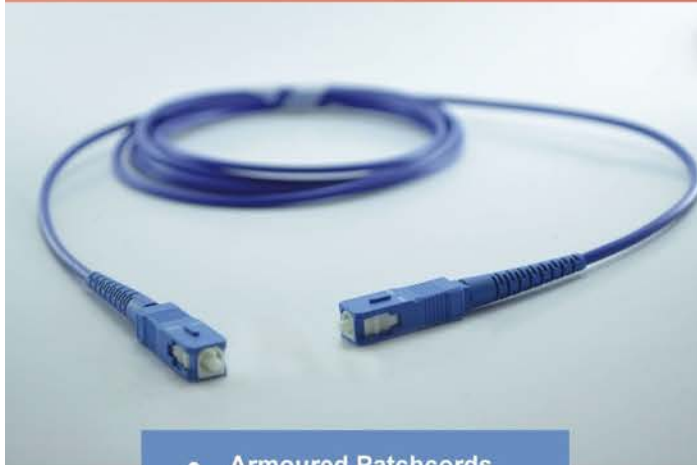
Color guide



Packing guide



• MTRJ



• Armoured Patchcords

MAIN FEATURES

- Available with any type of connector: SC, LC, ST, FC, MTRJ, MU
 - Polishing types: UPC and APC
 - Any type of fiber: SM G652D, SM G655, SM G657A1, SM G657A2, SM G657B3, MM OM1, MM OM2, MM OM3, MM OM4
 - Cable outer diameter (O.D.): 0.9mm, 2.0mm & 3.0mm (simplex or duplex zipcord), customized O.D. available
 - Jacket available in LSZH (Low Smoke Zero Halogen), LSZH-FH (Flame Retardant UL94 V-0), PE or PVC Riser/Plenum (flame-retardant PVC)
 - Any length
 - Maximum Insertion Loss: SM <= 0.20 dB, MM <= 0.30 dB
 - Typical Insertion Loss: SM <= 0.15 dB, MM <= 0.20 dB
 - Return Loss: SM (UPC) >= 55.0 dB, (APC) >= 60.0 dB, MM >= 35.0 dB
- Several boots (colors and length) and dust cap (color, shape), see accessories section



• MPO

One Click Connector Cleaner



Color guide



Packing guide



• FC/APC



• FC/UPC



MAIN FEATURES

- Available types of connector: SC, LC, ST, FC, MTRJ, MU
- Concentricity: < 0.8um (SM) and < 4.0mm (MM), ferrules checked and assembled
- With 2.5 mm high-precision ceramic ferrule (SC, ST, FC) or 1.25 mm (LC)
- Polishing types: UPC and APC (SC, LC, FC)
- Duplex or simplex (SC, LC)
- For cables O.D. in the range 0.9-3.0mm
- Several boots (colors and length)



• LC/APC



• LC/UPC MM

MAIN FEATURES

- Available types of connector: SC, LC, ST, FC, MTRJ, MU
- Concentricity: < 0.8µm (SM) and <4.0mm (MM), ferrules checked and assembled
- With 2.5 mm high-precision ceramic ferrule (SC, ST, FC) or 1.25 mm (LC)
- Polishing types: UPC and APC (SC, LC, FC)
- Duplex or simplex (SC, LC)
- For cables O.D. In the range 0.9-3.0mm
- Several boots (colors and length)



• MU/UPC



MAIN FEATURES

- Available types of connector: SC, LC, ST, FC, MTRJ, MU
- Concentricity: < 0.8µm (SM) and <4.0mm (MM), ferrules checked and assembled
- With 2.5 mm high-precision ceramic ferrule (SC, ST, FC) or 1.25 mm (LC)
- Polishing types: UPC and APC (SC, LC, FC)
- Duplex or simplex (SC, LC)
- For cables O.D. In the range 0.9-3.0mm
- Several boots (colors and length)

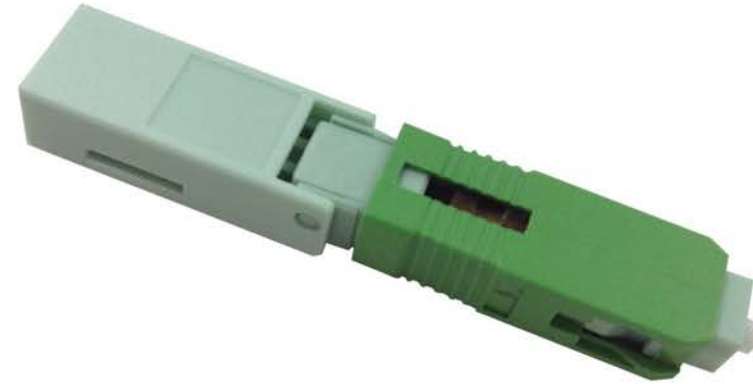




• MTRJ/UPC



• SC/UPC & SC/APC



• FC/UPC

- Available types of connector: SC, LC, FC
- No epoxy and no polishing required, pre-polished in UPC and APC
- For pigtail cable patchcord cable and drop cable up to 8.0mm diameter
- Insertion Loss: SM \leq 0.20 dB, MM \leq 0.30 dB
- Return Loss: SM (UPC) \geq 55.0 dB, (APC) \geq 60.0 dB, MM \geq 35.0 dB

CRIMPER



Color guide



Download
datasheets



Packing guide





● SC/APC DX Adapter Zirconia With Flange black Full Cap



MAIN FRATURES

- Available for connector types SC, LC, FC, ST, MPO, MTRJ, MU
- With zirconia ceramic sleeve or phosphore bronze sleeve
- Regular adapters female-female and hybrid types
- Female-female and female-male
- Simplex, dúplex, quadrúplex
- Plastic or metal
- With or without flange
- Several colors available for the plastic housing and the dust cap
- Insertion loss: < 0.20 dB
- Durability: >1000 matings

● SC/APC SX Adapter Outer Shutter Door Zirconia Flangless WhiteGreen



Color guide



Packing guide



● LC/UPC OM3 DX Adapter Zirconia without Flange Aqua



MAIN FRATURES

- Available for connector types SC, LC, FC, ST, MPO, MTRJ, MU
- With zirconia ceramic sleeve or phosphore bronze sleeve
- Regular adapters female-female and hybrid types
- Female-female and female-male
- Simplex, dúplex, quadrúplex
- Plastic or metal
- With or without flange
- Several colors available for the plastic housing and the dust cap
- Insertion loss: < 0.20 dB
- Durability: >1000 matings

● LC/UPC OM3 Quad Adapter Zirconia With Flange Aqua



Color guide



Packing guide





● MPO/UPC-MPO/UPC SM Adapter black



MAIN FRATURES

- Available for connector types SC, LC, FC, ST, MPO, MTRJ, MU
- With zirconia ceramic sleeve or phosphore bronze sleeve
- Regular adapters female-female and hybrid types
- Female-female and female-male
- Simplex, dúplex, quadrúplex
- Plastic or metal
- With or without flange
- Several colors available for the plastic housing and the dust cap
- Insertion loss: < 0.20 dB
- Durability: >1000 matings

● MU/UPC-MU/UPC SM Adapter



Color guide



Packing guide



● MTRJ/UPC-MTRJ/UPC SM Adapter black



● ST/UPC MM SX Adapter





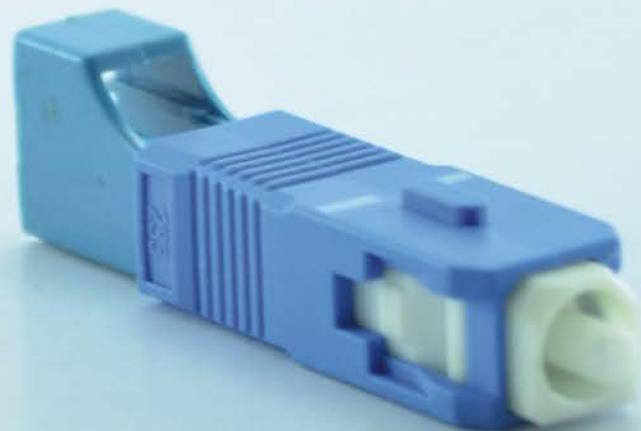
• SC/UPC-LC/UPC SM SX Hybrid Adapter
Female-Male Metal



MAIN FEATURES

- Available for connector types SC, LC, FC, ST, MPO, MTRJ, MU
- With zirconia ceramic sleeve or phosphore bronze sleeve
- Regular adapters female-female and hybrid types
- Female-female and female-male
- Simplex, duplex, quadrúplex
- Plastic or metal
- With or without flange
- Several colors available for the plastic housing and the dust cap
- Insertion loss: < 0.20 dB
- Durability: >1000 matings

• LC/UPC-SC/UPC SM SX Hybrid Adapter
Female-Male



Color guide



Packing guide



• SC/UPC-ST/UPC SM DX Hybrid Adapter
Female-Female



MAIN FEATURES

- Available for connector types SC, LC, FC, ST, MPO, MTRJ, MU
- With zirconia ceramic sleeve or phosphore bronze sleeve
- Regular adapters female-female and hybrid types
- Female-female and female-male
- Simplex, duplex, quadrúplex
- Plastic or metal
- With or without flange
- Several colors available for the plastic housing and the dust cap
- Insertion loss: < 0.20 dB
- Durability: >1000 matings

• SC/APC-FC/UPC MM SX Hybrid Adapter
Female-Female



Color guide



Packing guide





● **FC/UPC-ST/UPC SM SX Hybrid Adapter Female-Female Metal**



MAIN FEATURES

- Available for connector types SC, LC, FC, ST, MPO, MTRJ, MU
- With zirconia ceramic sleeve or phosphore bronze sleeve
- Regular adapters female-female and hybrid types
- Female-female and female-male
- Simplex, dúplex, quadrúplex
- Plastic or metal
- With or without flange
- Several colors available for the plastic housing and the dust cap
- Insertion loss: < 0.20 dB
- Durability: >1000 matings

● **LC/UPC-ST/UPC SM SX Hybrid Adapter Female-Female**



Color guide



Packing guide



MAIN FEATURES

- Available for connector types SC, LC, FC, ST, MU polishing types: UPC or APC
- With 2.5mm zirconia ceramic ferrule (SC) or 1.25 mm (LC)
- Any number of dB for the attenuation in the range 1-20 dB
- Metallic (connector style) or plastic (adapter style)
- Return loss: SM UPC \geq 50.0 dB, APC \geq 60.0 dB
- Durability: 200 cycles



● **SC/APC,SM Male-female,attenuator 5dB**

Color guide



Packing guide



● **LC/APC,SM Male-female,attenuator 5dB**



MAIN FEATURES

- Available for connector types SC, LC, FC, ST, MU polishing types: UPC or APC
- With 2.5mm zirconia ceramic ferrule (SC) or 1.25 mm (LC)
- Any number of dB for the attenuation in the range 1-20 dB
- Metallic (connector style) or plastic (adapter style)
- Return loss: SM UPC >= 50.0 dB, APC >= 60.0 dB
- Durability: 200 cycles



● LC/UPC,SM Male-female,attenuator 5dB

Color guide



Packing guide



● MU/UPC SM Male-female Attenuator 10dB



MAIN FEATURES

- Available for connector types SC, LC, FC, ST, MU polishing types: UPC or APC
- With 2.5mm zirconia ceramic ferrule (SC) or 1.25 mm (LC)
- Any number of dB for the attenuation in the range 1-20 dB
- Metallic (connector style) or plastic (adapter style)
- Return loss: SM UPC >= 50.0 dB, APC >= 60.0 dB
- Durability: 200 cycles



● SC/UPC,SM Male-female,attenuator 5dB

Color guide



Packing guide



● SC/APC,SM female-female,attenuator, adapter style, 5dB





OPTICAL SPLITTER

- optical splitters available in various configurations, either connectable or not.
- standard or multicolor colors, both in the Mini Plc version and in the Plc cassette version.



Color guide



Packing guide



CLEAN PEN FOR CONNECTORS SC AND LC

- LASER PEN 20KM FOR CHECK SIGNAL LIGHT, FOR ALL CONNECTOR SC/ST AND LC



• CLEAN WIPES BOX





• FTTH TERMINAL BOX 16 PORT FIBER



Material:ABS+PC
Max cable diameter:5x8mm
Cable ports:2
Size:85*85*23mm
Size with packaging:120*100*5mm
Weight empty:47 grs.(including the screws)
Weight fully loaded with adapters:56 grs.(including the screws)
Weight with packaging:88 grs.
Packaging:individual PP polybag zip-lock and/or individual mini carton box
Brand:neutral,logo printing or laser engraving upon request

• FTTH TERMINAL BOX 2 PORT FIBER

Packing guide



• FTTH TERMINAL BOX 8 PORT FIBER

Color guide



• FTTH TERMINAL BOX 24 PORT FIBER



• FTTH TERMINAL BOX 4 PORT FIBER